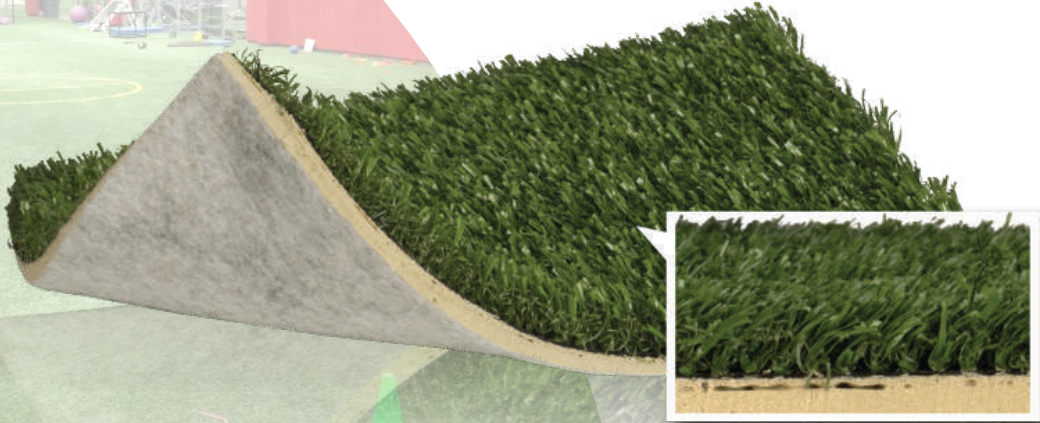


TRAINER'S CHOICE



Athletics



PROPERTY

- Primary/Stalk Yarn Polymer
- Secondary/Thatch Yarn Polymer
- Yarn Cross Section
- Standard Colors
- UV Stabilized
- Fabric Construction
- Primary Backing
- Coating Type(s)
- Perforations
- Recommended Infill
- Pile Height
- Total Weight
- ISO 9001 Quality Assured
- Roll Width
- Blades Per Sq. Ft.
- Warranty
- Yarn Type

DESCRIPTION

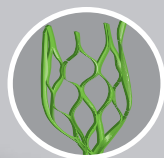
- Polyethylene
- Nylon
- Polyethylene Slit Film/ Texturized Nylon
- Field Green; White; Red; FLA Blue; Black; Silver
- Yes
- Yes
- Tufted
- Dual Layered Woven Polypropylene
- 5mm Polyurethane Foam w/Fleece; SilverBack™ Polyurethane
- Custom Only
- N/A
- 3/4"
- 125 oz. (Foam)
67 oz. (SilverBack™)
- Yes
- 15 Ft.
- 4224 blades/sq. ft.
- 5 Year
- Slit-film

ADVANTAGES

- Perfect for training
- High performance quality
- Reacts naturally
- Improved durability and safety
- Helps create multipurpose facilities
- Virtually maintenance free
- Clean and can be cleaned easily
- Consistent performance over time and use

Standard Line and Field Colors*

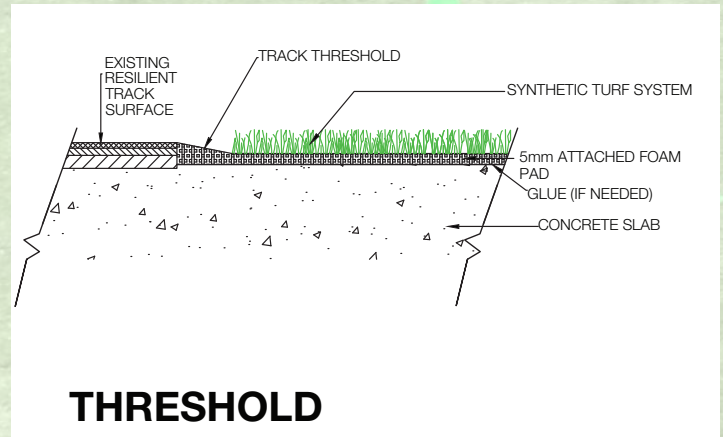
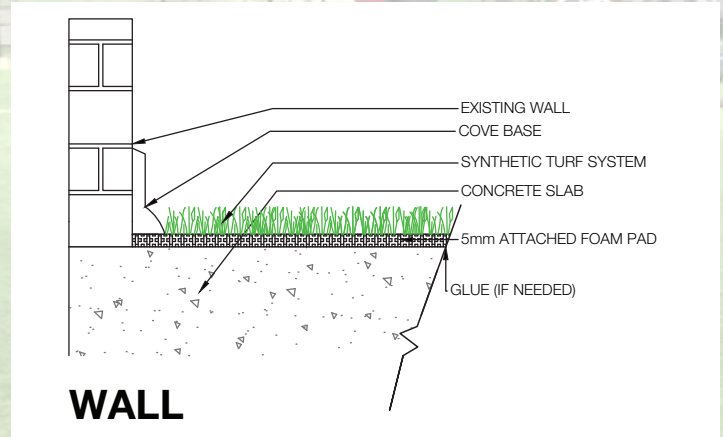
*Custom colors available upon request



TRAINER'S CHOICE

BENEFITS

This non-rubber infilled turf has all the advantages of previous generations and performs even higher in wear and resistance tests. The blend of nylon and polyethylene is an almost perfect 50/50 combination. This gives you the true ball roll of a traditional nylon field, with the softness of the new generation rubber-filled turf. No rubber infill makes maintenance easier, and up to 10% cooler. These systems can also be portable with added 4" or 8" velcro.



It is the policy of Synthetic Turf International to continuously improve their line of products. Therefore, Synthetic Turf International reserves the right to change, modify or discontinue systems, specifications and accessories of all products at any time without notice or obligation to purchaser. These are standard specifications subject to manufacturing tolerances and consumer requests.